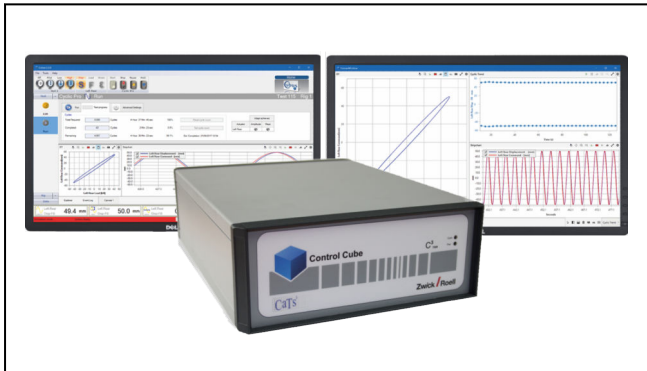


Product Information

Cubus Software 2.1 Update

CTA: 236280 236281



One measurement and control system: The servo-controller Cube and the testing software Cubus

Expertise and experience

A new update is now available for the Cubus testing software, which has already been proven in over 100 installations worldwide. In addition to general developments including Windows 10 compatibility, a number of customer suggestions and requests were also incorporated. Our new version is not only more efficient and user friendly, but also suitable for use with Windows 10.

With Microsoft discontinuing support for Windows 7 as of January 2020, we recommend switching to Windows 10 to future-proof your current system. Please note that Cubus has only been tested with and released for Windows 10 as of Version 2.1.48.

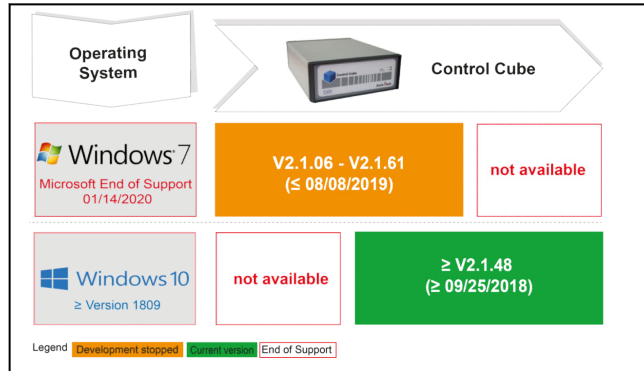
Improved performance

Cubus is now a high-performance and stable 64-bit application for fast test data processing and improved memory usage.

Safety is top priority

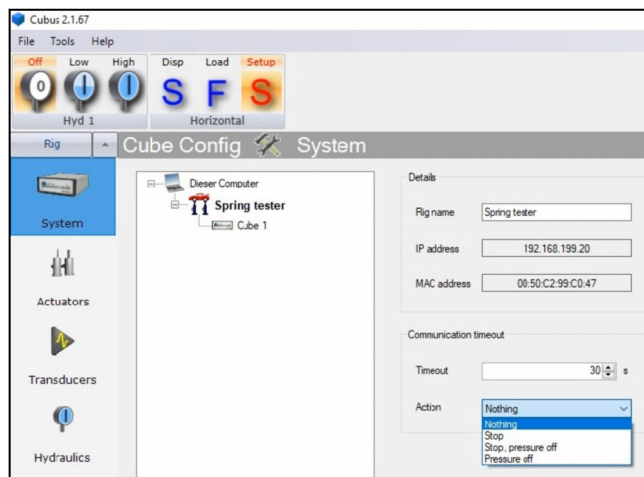
We have implemented different enhancements to improve safety features of the Control Cube control system:

- Automatic plausibility check of virtual channels prior to pressure application; if necessary, a warning message is displayed. The corresponding explanation can then be found in the results report, so that settings can be adjusted accordingly and the test sequence becomes traceable.



Compatibility of Cubus testing software and operating system

- Triggering of preselected actions in case of communication interruption (e.g. stop test, turn off pressure, or both). We have also added individually configurable timeout actions that can be adapted to specific user requirements.
- Checking for missing or implausible limit values; if applicable, a user notification is displayed and the test cannot be started.



CTA: 236589

Product Information

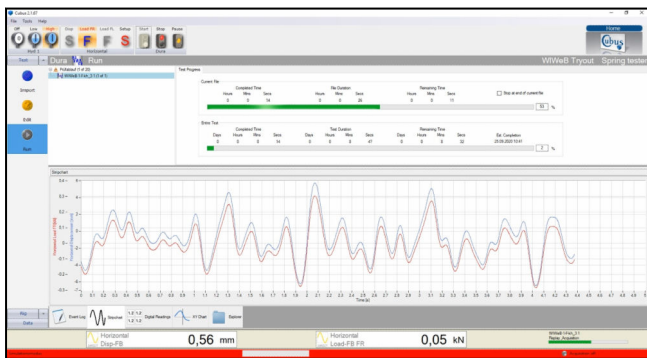
Cubus Software 2.1 Update

Optimized testing and data management

We made the testing and data management processes more efficient:

- The new Cubus Explorer is now even faster and more user friendly. The maximum number of sequence repetitions was increased to one million, which is sufficient for any type of application.
- The process of exporting the data that is collected in cyclic tests is now automated—a significant improvement in efficiency and usability. Based on these improvements, manual exports are no longer necessary, saving additional time.
- The data can now be exported in RPCIII format and directly imported into the customer's analysis software.

CTA: 236681

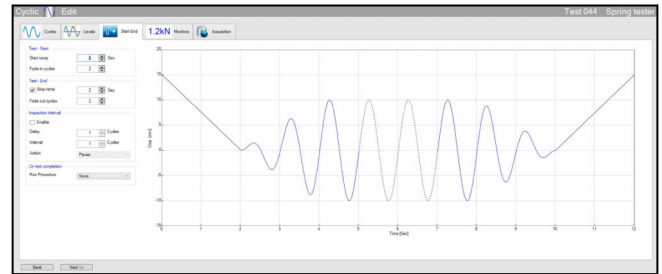


CTA: 236604

Simple user management and user interface functionality

Simplification of daily test tasks:

- The user name is now stored in the user management program to improve traceability.
- Optimized layout of the settings menu.
- Expansion of available shortcuts for improved efficiency and speed.
- New function element for temporary interruption of a test, e.g. for visual inspection of a specimen. As an option, a regular recurring interval can also be set.



Now is a great time to update your Cubus testing software to take advantage of the new functionalities. Contact: aftersales@zwickroell.com

More information on Cubus can be found on our website at www.zwickroell.com.

- We have also improved the folder structure for the measurement data to simplify data management.
- The data reduction at reversal point now makes it possible to skip any number of reversal points during export, which provides more flexibility in defining the export data.
- With the blend mode control of the block program an adjustment in several modes, such as travel control to reach peak loads, is now available.
- The virtual transducer function enables the input of a mathematical formula for calculated (virtual) channels. These can be used as monitoring or control variables. Functions including digital display, oscilloscope, data acquisition and limit values are also supported for virtual channels. These functionalities are available up to the maximum system frequency.